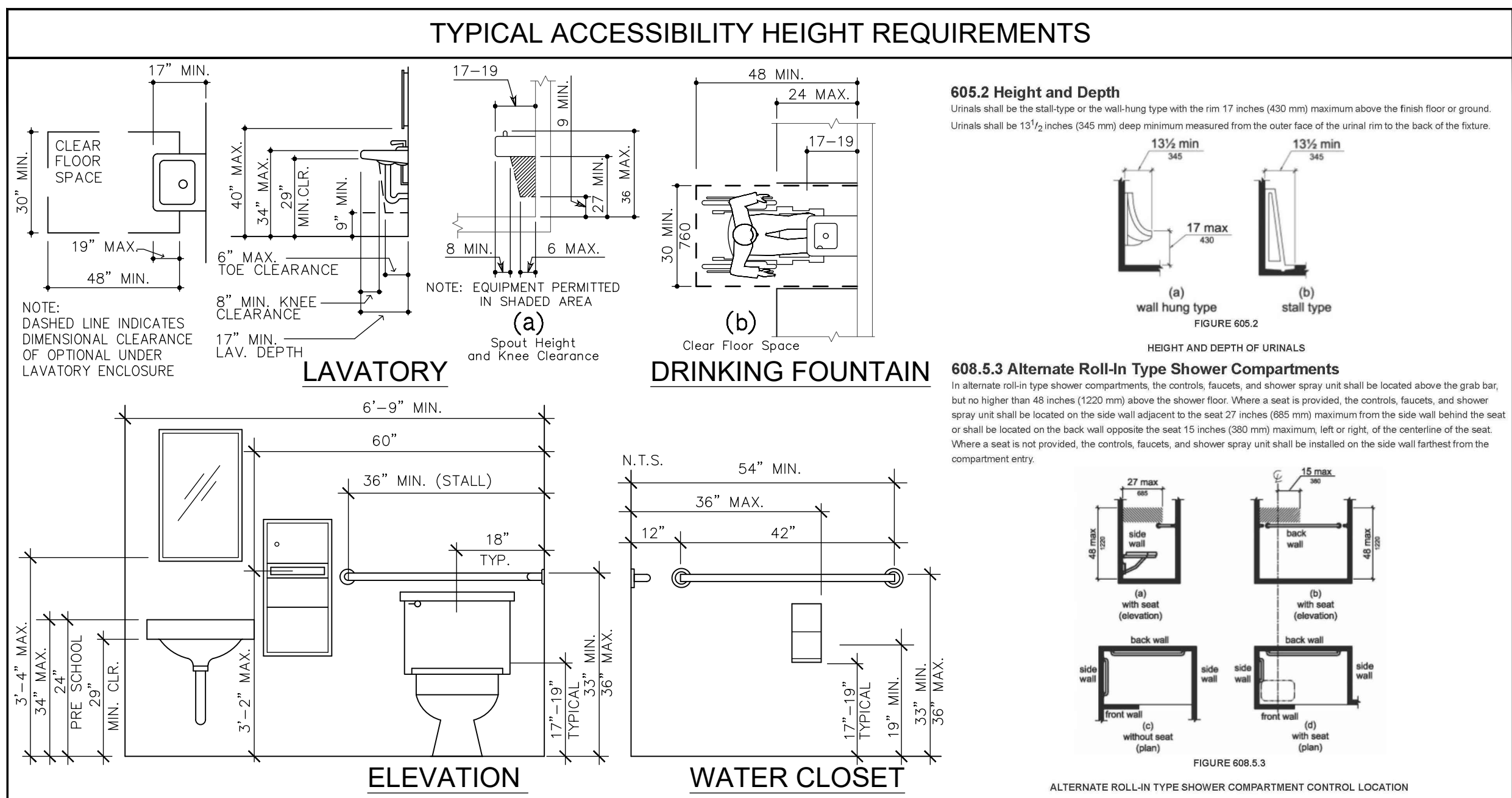

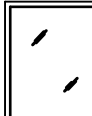


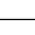



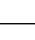






SCALE: 1/2"=1'-0"

SCALE: 1/2"=1'-0"

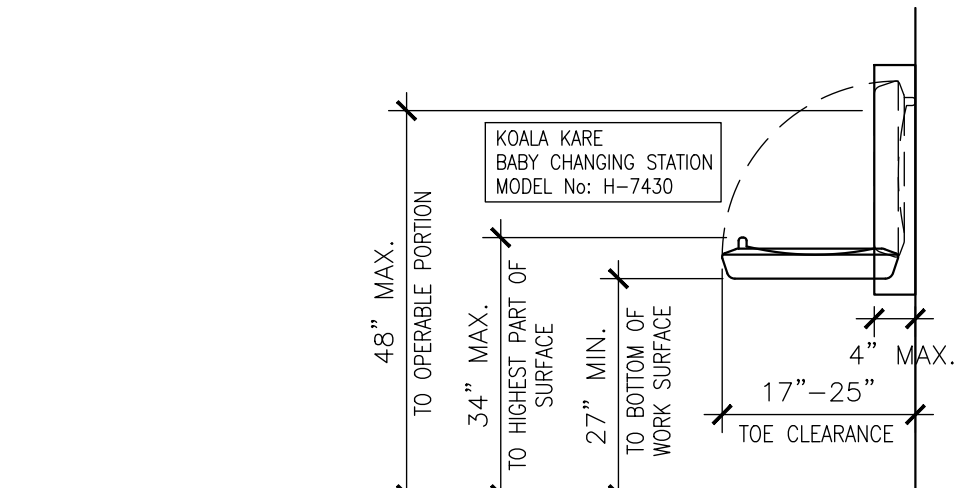


BATH ACCESSORIES SCHEDULE	
1	1
2	2
3	3
4	4
5	5
6	6
7	7
8	8
9	9
10	10
11	11
12	12
13	13
14	14
15	15
16	16
17	17
18	18
19	19
20	20
21	21
22	22
23	23
24	24
25	25
26	26
27	27
28	28
29	29
30	30
31	31
32	32
33	33
34	34
35	35
36	36
37	37
38	38
39	39
40	40
41	41
42	42
43	43
44	44
45	45
46	46
47	47
48	48
49	49
50	50
51	51
52	52
53	53
54	54
55	55
56	56
57	57
58	58
59	59
60	60
61	61
62	62
63	63
64	64
65	65
66	66
67	67
68	68
69	69
70	70
71	71
72	72
73	73
74	74
75	75
76	76
77	77
78	78
79	79
80	80
81	81
82	82
83	83
84	84
85	85
86	86
87	87
88	88
89	89
90	90
91	91
92	92
93	93
94	94
95	95
96	96
97	97
98	98
99	99
100	100

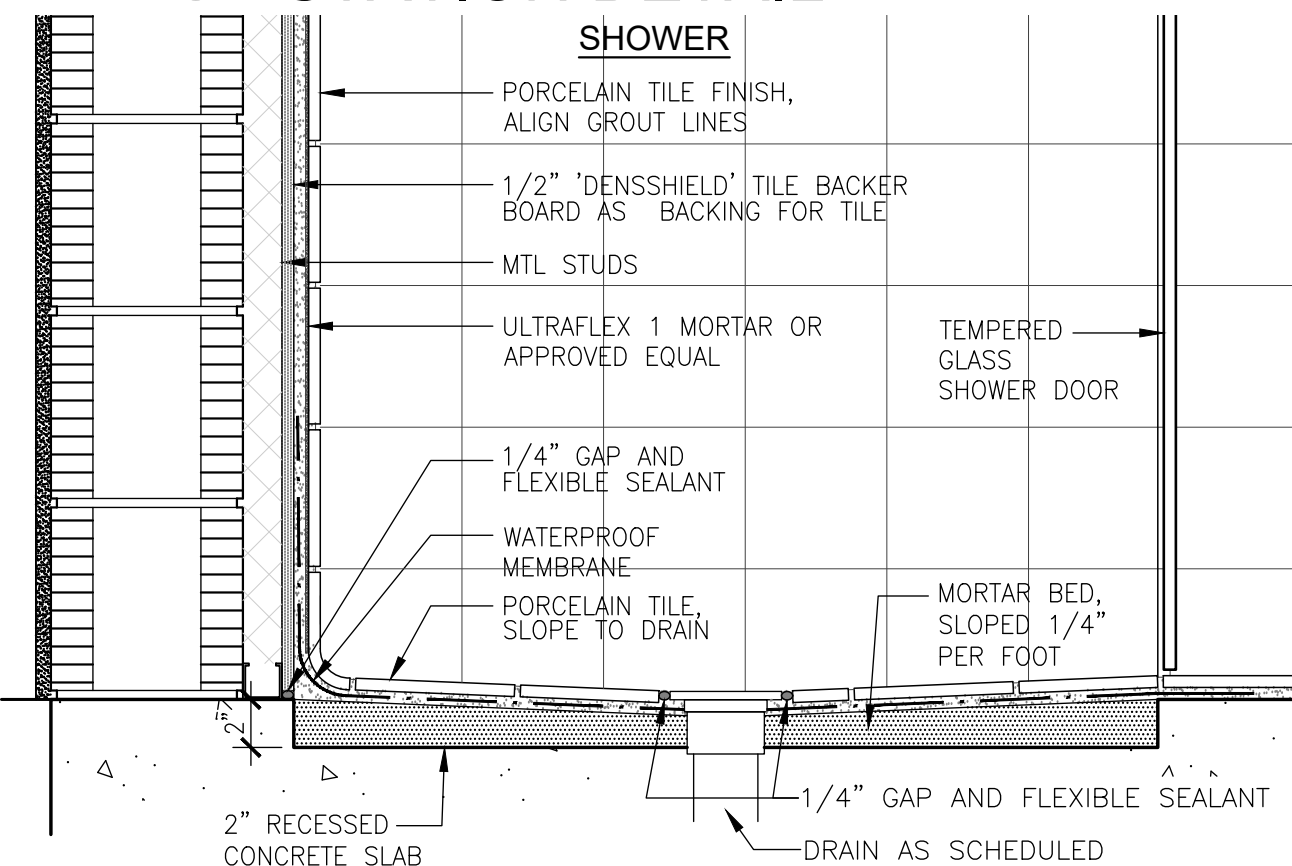
SYMBOL	SPECIFICATION
	MFRG: ASI MODEL: 0600-2430 MIRROR W/ANGLE FRAME  40" AFF. GLASS
	MFRG: Ulme MODEL: H-3415GR COLOR: GRAY FOAMING AUTO SOAP DISPENSER-1,000ml  48" AFF. MAX
	MFRG : BY ID MODEL : BY ID SURFACE MOUNTED HAND DRYER  48" AFF.
	MFRG: Ulme MODEL: H-1127 JUMBO BATH TISSUE DISPENSER-SINGLE ROLL  19" AFF.
	MFRG: BOBRICK MODEL: #B 550X36 & 42 SURFACE MOUNTED GRAB BARS  36" AFF.  36" AFF. SAFETY GRIP FINISH - MOUNT SECURELY W/SOLID BLOCKING/COATED FOR MARINE GRADE
	MFRG: BY ID MODEL: MOVABLE FLOOR-BY OWNER 12" DIA X 24" H WASTE PAPER BIN 

NOTE:

- ALTERNATE SCHEDULE ACCEPTABLE, CONTRACTOR TO SUBMIT SUBMITTALS FOR REVIEW PRIOR TO PROCUREMENT AND INSTALLATION.
- SEE TYPICAL ACCESSIBILITY HEIGHT REQUIREMENTS FOR ADDITIONAL ACCESSIBILITY MOUNTING SPECIFICATIONS
- ALL DIMENSIONS ARE TO CENTERLINE OF STUD FOR NEW PARTITIONS AND FACE OF FINISHED WALL FOR EXISTING PARTITIONS.
- PROVIDE 2x4 DIMENSIONED BLOCKING IN PARTITIONS TO RECEIVE WALL MOUNTED FIXTURES, CABINETS AND SHELVING
- INSULATE ALL EXPOSED PIPES



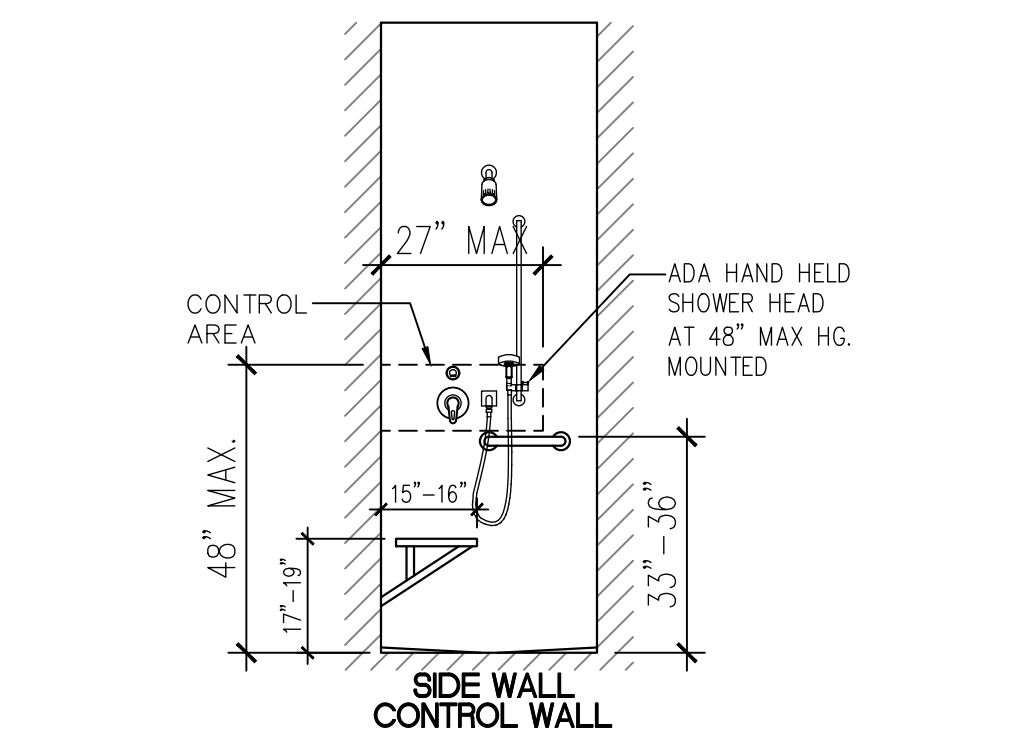
BABY CHANGING STATION DETAIL



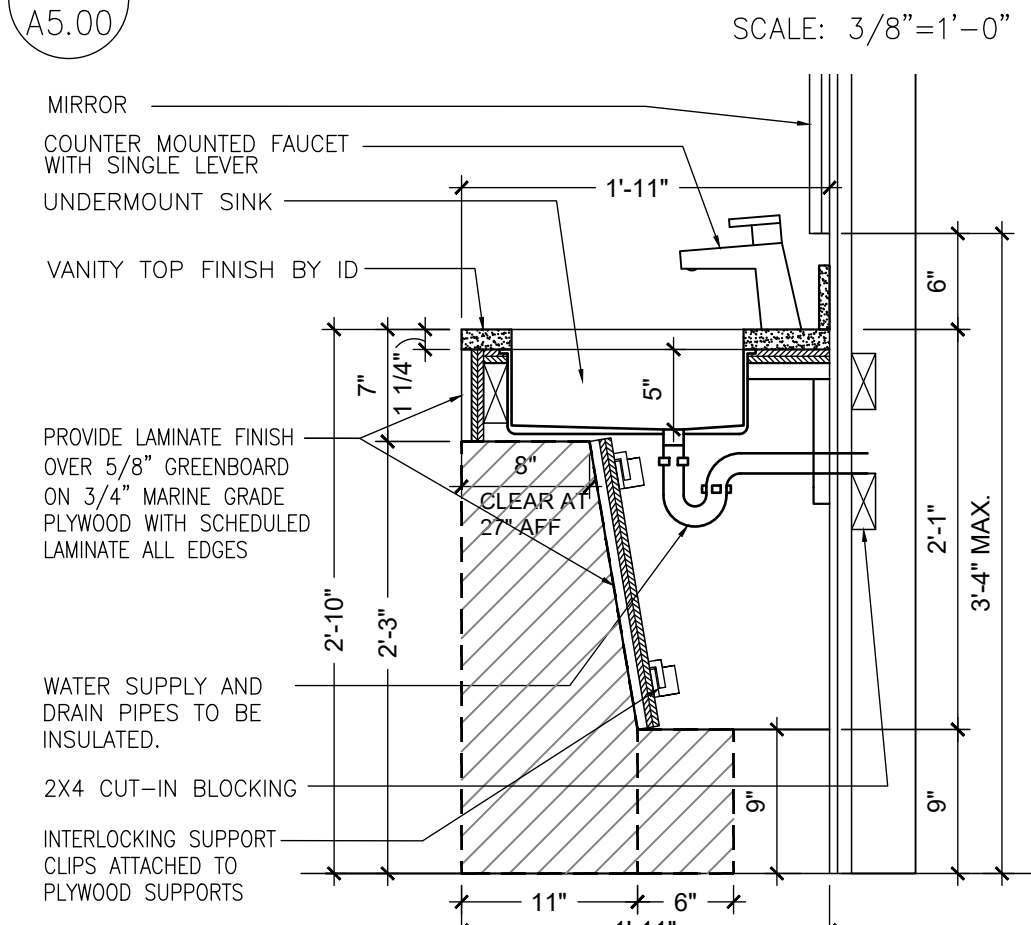
CURBLESS SHOWER DETAIL

FIXTURE AND ACCESSORY SCHEDULE

SYMBOL	DESCRIPTION	MANUFACT.	MODEL/NUMBER	REMARKS
1	TOILET	PROFLO	HIGH EFFICIENCY FLUSH VALVE BOWLS PF1221/PF1723 WHITE	ADA COMPLIANCE
1A	TOILET FLUSHOMETERS	SLOAN	SLOAN 8111-1.28 OPTIMA SYSTEMS, BATTERY POWERED, SENSOR OPERATED G2 FLUSHOMETERS	ADA COMPLIANCE, POLISHED CHROME
2	URINAL	PROFLO	HIGH EFFICIENCY URINAL Siphon-2-JET, REAR OUTLET PF1815 WHITE	ADA COMPLIANCE
2A	URINAL FLUSHOMETERS	SLOAN	SLOAN 8186 OPTIMA SYSTEMS, BATTERY POWERED, SENSOR OPERATED G2 MODEL URINAL FLUSHOMETER	ADA COMPLIANCE, POLISHED CHROME
3	WALL HUNG LAVATORY	PROFLO	COMMERCIAL WALL HUNG LAVATORY PF5411 WHITE	ADA COMPLIANCE
4	FREE STANDING UTILITY SINK	PROFLO	SINGLE BASIN UTILITY SINK -WALL MOUNTED PF121233W OR S/M	INCLUDE WALL MOUNT KIT & 'PROFLO' FAUCET MODEL PF1119. PROVIDE SOLID BLOCKING.
5	RAIN SHOWER HEAD SHOWERS	SIGMA	6-PLUNGER DELUXE SHOWERHEAD W/8" ARM & SQUARE FLANGE	CHROME FINISH
5A	RAIN SHOWERHEAD / HANDSHOWER KIT FOR ADA SHOWERS	SIGMA	6-PLUNGER DELUXE SHOWERHEAD W/8" ARM & SQUARE FLANGE	INCLUDE: "ARTOS-VESTOWER" F902-12CH SO SHOWER OUTLET FLOW, FLEXIBLE SHOWER HOSE, SQUARE HANDSHOWER, CHROME FINISH AND ROBELO 3" SLIDE BAR CHROME FINISH
6	SHOWER CONTROL	SIGMA	SIGMA 18.30.291 VALVE W/VOLUME CONTROL, SIGMA 1.0595511 INTEGRATED RECTANGLE PLATE	
6A	SHOWER CONTROL ADA	SIGMA	SIGMA 18.30.292 VALVE W/TWO WAY DIVERTER SIGMA 1.0595511 INTEGRATED RECTANGLE PLATE	
7	RESTROOM COUNTERTOPS	PROFLO	ONE QUARTZ SURFACE, COLOR: N90 WHITE ICE	
8	UNDERMOUNT SINK	KOHLER	KOHLER UNDERMOUNT SINK K-21058 BRAZIN WHITE	
9	ADA FAUCET	KOHLER	KOHLER K-24804-4N PARALLEL® LOW SINGLE HANDLE ADA FAUCET IN VIBRANTUM TITANIUM	ADA COMPLIANCE



CONTROL WALL DTL



ADA LAVATORY DETAIL

KEYNOTES:

*All keynotes may not apply.
 (X-X) KEYNOTE TYPE

ACCESSORIES

- A-1 EXTERIOR IMPACT RESISTANT STOREFRONT, SEE SCHEDULE
- A-2 EXTERIOR IMPACT RESISTANT WINDOW, SEE SCHEDULE
- A-3 EXTERIOR IMPACT RESISTANT GLASS, SEE SCHEDULE
- A-4 EXTERIOR IMPACT DOOR, SEE SCHEDULE
- A-5 DUMPTER ENCLOSURE, SEE SITE PLAN DETAIL 05P-2
- A-6 BACKLAP PROTECTION FOR SLOPE, SEE SCHEDULE
- A-7 HEAVY DUTY BULK RACK (16 BIKES) INGROUND MOUNT POWDER COATED W/GROUT COVER
- A-8 EXTERIOR FRONT DECK COUNTERTOP WITH PULL-OUT ADA LEDGE 34" HG. SEE DETAIL
- A-9 ELECTRIFIC FIRE PLACE WITH 65" TV ABOVE
- A-10 42" HEIGHT BAR TABLE WITH 12" DEEP WOOD COUNTERTOP FINISH SELECTED BY A-11
- A-11 4" H4-ALUMINUM COLUMN POST
- A-12 NEW 1/2" LUMBER TRIM, SEE SCHEDULE SHOP DRAWINGS
- A-13 WINE BOTTLE FINISH WALL WITH BOTTLE FINISH WALLING STATION BY ELKAY, OR SIMILAR
- A-14 LINE OF DROPPED CEILING ABOVE, SEE RCP PLANS
- A-15 LINE INDICATES HEADER ABOVE, SEE RCP PLANS
- A-16 BUILT-IN WOODEN TOWEL BIN STORAGE/TOWEL DROB CABINET, SUBMIT SHOP DRAWINGS OF RACK ABOVE
- A-17 34" MAX. HEIGHT VANYA ENGINEERING STONE TOP WITH UNDERMOUNT SINK. BUILT-IN 12" WOODEN TOWEL BIN FOR FINISHES.
- A-18 ADA COMPLIANT VESSEL SINK BELOW COUNTER
- A-19 NEW MIRROR TO BE AT 40" MAX TO THE BOTTOM OF REFLECTIVE AREA, PROVIDE BACKING TO BE 1/2" MIN. THICK FOR FINISH AND SELECTIONS.
- A-20 STALL COMPOSITE PARTITION, SEE FINISH SCHEDULE/D./I. PLANS
- A-21 TYPICAL ACCESSIBLE GRAB BARS COMPLYING WITH ADA FBC 2023.
- A-22 (WALL MOUNT GRAB BAR SEE DETAILS)
- A-23 WALL MOUNTED SHOWER HEAD
- A-24 SHOWER CONTROLS
- A-25 ADA ADJUSTABLE DETACHABLE HAND HELD SHOWER HEAD
- A-26 ADA SHOWER CONTROLS ABOVE GRAB BAR NOT EXCEED 48" A.F.F.
- A-27 ADA SHOWER SEAT
- A-28 TEMPERED GLASS PARTITION AND SHOWER ENCLOSURE
- A-29 6" HG SHOWER SILL, SEE DETAIL
- A-30 SCHLUTER-SCHENE LINE PROTECTION STRIP OR SIM.
- A-31 EXTERIOR GLASS TRANSITION FOR TILE EDGES AND OUTSIDE CORNERS OF TILE SURFACE OR SIM
- A-32 FLOW PAVING TO BE SELECTED BY OWNER. INSTALLED BY CONTRACTOR
- A-33 DETACHABLE SUSPENDED NETTING TO BE SELECTED BY OWNER. INSTALLED BY CONTRACTOR

WALL FINISHES

- W-1 NEW 8" CONCRETE BLOCK WALL WITH 5/8" (2 COATS) CEMENTITIOUS FINISH (STUCCO). SEE WALL SCHEDULE FOR INTERIOR FINISHES.
- W-2 STEEL BRACE FRAMED TO STRUCTURAL STEEL COLUMN.
- W-3 STEEL COLUMN. SEE STRUCTURAL PLANS.
- W-4 EXTERIOR INSULATED METAL PANEL WALL WITH EXTERIOR PROFILE AND INTERIOR FINISH. PROVIDE THE LOOK OF A MASONRY STUD, SECURED IN BETWEEN INTERIOR FRAMING. SUBMIT SHOP DWGS.
- W-5 INTERIOR PARTITION WITH ACOUSTICAL INSULATION (WHEN IS NOTED). NON GALV. LEADING EDGE. STUD ANCHORED TO CONCRETE SLAB.
- W-6 PROVIDE 5" HEIGHT THE FINISH ON 1/2" CEMENT BOARD AS THE BAKER THEN GREEN BOARD ABOVE WITH LATX PAINT ANCHOR ON GALV. STEEL STUD (25GA).
- W-7 PROVIDE 1/2" BEHIND THE FINISH ON 1/2" CEMENT BOARD WITH SHOWER LINER ON GALV. STEEL STUD (22 GA.) (SEE DETAIL 7/4.5.0 FOR WATERPROOFING)
- W-8 5/8" G.W.B. ON 1 1/2" MET. FURRING (22 GA.) AT 16" O.C. WITH R-8 RIGID INSULATION ON BLOCK END OF STUD.
- W-9 PROVIDE OPENING PENETRATION 2"x4"x8" FOR R.A.C. SEE MEP'S DWGS.
- W-10 PROVIDE OPENING PENETRATION 32"x16" FOR SUPPLY A.C. SEE MEP'S DWGS.
- W-11 PROVIDE REMOVABLE SLAG WALL PANEL BEHIND WINDOW WHERE IS NOTED.

CEILING

- CLG-1 EXPOSED STRUCTURE ABOVE TO BE PAINTED WHITE COLOR
CLG-2 2X2 ACOUSTICAL SUSPENDED CEILING TILE
CLG-3 1 LAYER OF 5/8" FINISH GYP BOARD ATTACHED TO STUD OR JOIST MEMBER AS
REQUIRED, SEE SCHEDULE
CLG-4 1 LAYER OF 5/8" FINISH MOISTURE GYP BOARD ATTACHED TO STUD OR JOIST
MEMBER AS REQUIRED.
CLG-5 TENNIS COURT LIGHTING (SEE RCP A2.11 FOR DETAILS)
CLG-6 ENERGY SAVER INSULATION SYSTEM

FOUNDATION / FLOOR SYSTEM

- F-1 HARD COURT SURFACE COVERED WITH ACRYLIC RESINS TO SEAL THE SURFACE AND MARK PLAYING LINES "BY OTHERS" OVER 5" THICK CONCRETE SLAB ON WELL COMPACTED TERMITE TREATED SOIL, SEE SPECS
- F-2 NEW 5" THICK CONCRETE SLAB ON WELL COMPACTED TERMITE TREATED SOIL, SEE STRUCTURAL FOR DETAILS.
- F-3 NEW CONCRETE SIDEWALK POURED-IN PLACE WITH CROSS SLOPE <1:50
- F-4 2" RECESSED CONCRETE SLAB
- F-5 5/8" SLAB FLOOR RECESS, VERIFY FINAL FLOOR FINISH AND PROVIDE FLUSH FINIS FLOOR FROM CLUBHOUSE TO TENNIS COURT

ROOF

- | | |
|--------|---|
| RF-1 | TOO ROOFING SYSTEM ON ISO INSULATION ON METL DECK AND METAL JOISTS, SUBMIT SHOP DRAWINGS. |
| RF-2 | WHITE STANDING SEAM METAL ROOFING PANEL OVER STEEL RIGID FRAME STRUCTURE WITH DOUBLE LAYER UNFACED INSULATION BLANKETS OVER ENERGY SAVER FABRIC INSTALLED WITH A NETWORK OF STEEL BANDING, SUBMIT SHOP DWGS |
| RF-2.1 | WHITE ENERGY SAVER FABRIC INSTALLED WITH A NETWORK OF STEEL BANDING AND DOUBLE LAYER UNFACED INSULATION BLANKETS BETWEEN PURLINS |
| RF-3 | ROOF DRAIN, SEE MEP DWGS |
| RF-4 | ROOF OVERFLOW DOWNSPUR, SEE MEP DWGS |
| RF-5 | ROOF WATER LEADER, SEE MEP DWGS FOR SIZE AND CONNECTIONS |
| RF-6 | 6"x8" ALUMINUM GUTTER, TYP. |
| RF-7 | ALUMINUM DOWNSPOUT |

MECHANICAL / ELECTRICAL / PLUMBING

- MEP-1 ELECTRIC METER
MEP-2 ELECTRICAL PANEL
MEP-3 CONDENSING UNITS SEATING ON 18" HG. METAL STANDS, SEE MEP DWGS
MEP-4 RTU UNITS SITTING ON CONCRETE SLAB WITH SCREEN GREEN VEGETATION 3' HIGH
MINIMUM, SEE MEP AND LANDSCAPE DWGS
MEP-5 FLOOR DRAIN
MEP-6 FREE STANDING MOP SINK
MEP-7 EXPOSED INDOOR ROUND DUCTWORK, SEE MEP'S DWGS FOR SIZE AND SPECS.
MEP-8 WATER HEATER ABOVE, 7" MINIMUM CLEARANCE ABOVE FROM FLOOR TO PLATFORM.
SEE MEP'S DWGS FOR SIZE AND SPECS.

[illegible]

REVISIONS

- 1.
- 2.
- 3.
- 4.
- 5.
- 6.
- 7.
- 8.
- 9.
- 10.

ALL IDEAS, DESIGNS, ARRANGEMENTS, AND PLANS INDICATED OR REPRESENTED BY THIS DRAWING ARE OWNED BY AND PROPERTY OF THIS OFFICE, AND WHERE CREATED, EVOLVED, AND DEVELOPED FOR USE ON, AND IN CONNECTION WITH THE SPECIFIED PROJECT. NONE OF SUCH IDEAS, DESIGNS, ARRANGEMENTS, AND PLANS SHALL BE USED BY, OR DISCLOSED TO ANY PERSON, FIRM, OR CORPORATION FOR ANY PURPOSE WITHOUT WRITTEN PERMISSION OF RWB / LINARES ARCHITECTURE, INC.

*FLORIDA INDOOR TENNIS
POMPANO BEACH, FL 33069*

3000 NORTH MILITARY TRAIL, SUITE 209
33064 RATION, FLORIDA 33431
PHONE 561-391-0081 FAX 561-391-0085
EMAIL mail@rwb-arch.com

RWB
Linars
ARCHITECTURE

PROJECT # 21-035

DATE PER ISSUANCE

SHEET #

A5.00

JUAN C. LINARES

AA26000640

PZ23-12000009

03/05/2025